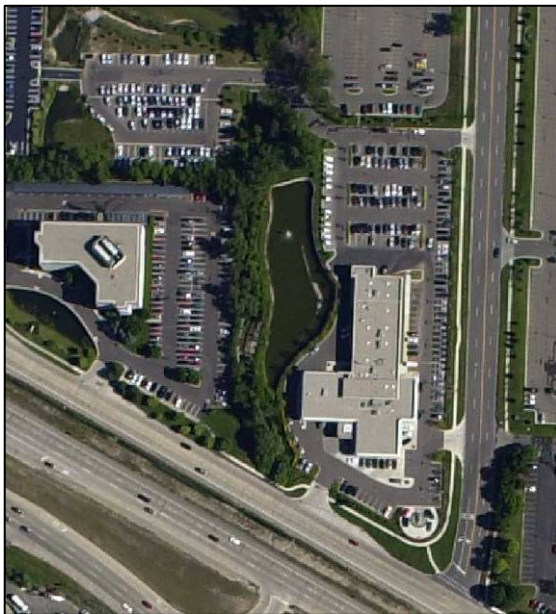


PROJECT Profile

LAND DEVELOPMENT

Meade Lexus of Southfield Southfield, MI

The Meade Lexus Dealership is a state-of-the-art facility with sales and service components, located on a 7-acre site. The development includes parking for 270 vehicles, including a satellite parking lot for storage of sales vehicles.



Spalding DeDecker Associates, Inc. (SDA) was the Civil Engineering and Surveying consultant for the project. SDA has subsequently been involved with the design and construction of two additions to the building. SDA also provided land surveying services.

SPECIAL FEATURES

SDA designed the site improvements around several development constraints, including wetlands and an environmentally sensitive trout stream (Pernick Drain). The project required a stream crossing and extensive bank stabilization, which SDA coordinated with the City's environmental

consultant and the Michigan Department of Environmental Quality (MDEQ) to ensure minimal impact to the stream.

The project also required the construction of a large detention basin, which incorporated a permanent water depth and standpipe filter outlet for improved water quality at the discharge point. The pond required extensive segmental block retaining walls due to the limited area available on the site.

PROJECT START - END

January 1994 - August 1996

PROJECT COST

\$10,000,000.00

SDA KEY PERSONNEL

Michael F. DeDecker, PS

Paul Kuplicki

George M. Platz, Ps

Thomas J. Sovel, PE

Paul C. Wade, PE

SDA PROJECT NO.

DV94-026